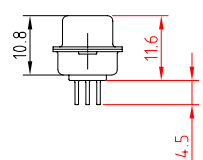
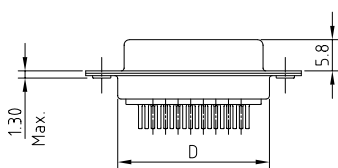
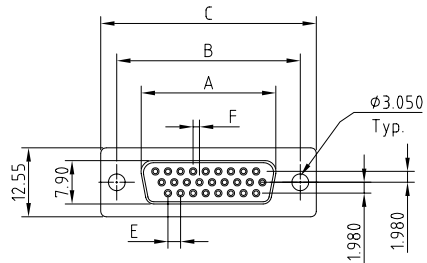


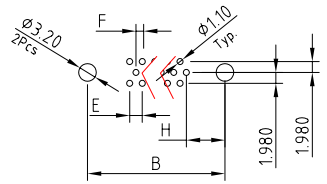
RevNo	Date	Signature	Checked



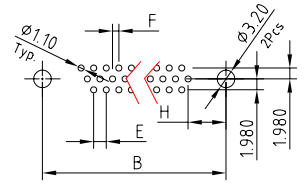
108XXFXXX - - - - L F

D-Sub 180D	Vacant:Default PBT
Typ 15	P2:PA6T
26	P3:LCP
4,4	P4:PA9T
62	Vacant:No Screw
	S:4.8
	M:5.0
	L:5.8
7.Full Nickel	Vacant:No Accessories
8.Nickel /But back-Shell:Tin	A After -Screw H=3.0
9.Tin	B After -Screw H=4.0
11.Gold	C After -Screw H=5.8
	D Before -Screw H=5.8
	E Coalescent Nut H=5.8
	F Befor--H=4.0
	G After -H=6.1
	H. Ater -H=6.1 ,And Before H=5.3
	Vacant:Default 1u'
	3. 3u'
	5. 5u'
	6. 10u'
	7. 15u'
	8. 30u'

Re Layout P.C.B.
15 POSITION



Re Layout P.C.B.
26 /44 /62POSITION



Note:

No.	A	B	C	D	E	F	H
15	16.33	24.99	30.81	19.23	2.29	1.145	7.04
26	24.66	33.32	39.14	27.56	2.29	1.145	6.88
44	38.38	47.04	53.04	41.28	2.29	1.145	6.88
62	54.84	63.50	69.32	57.33	2.41	1.205	7.00

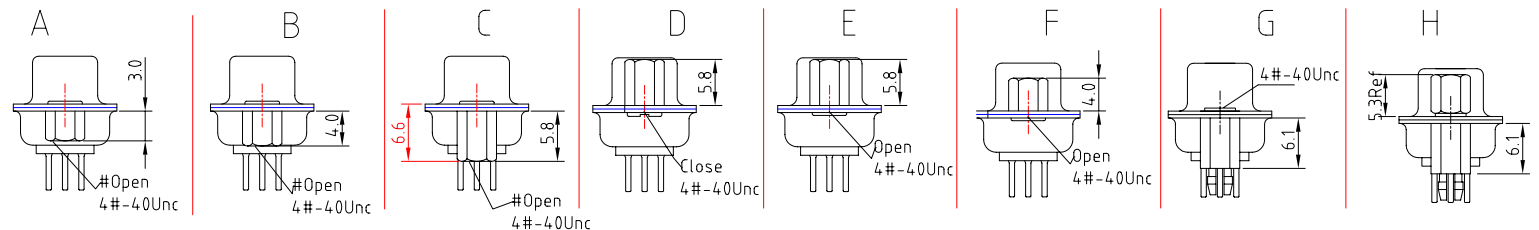
ELECTRICAL CHARACTERISTICS

Contact Current Rating: 3Amperes.
 Dielectric Withstanding Voltage: AC 500V at sea level.
 Insulation Resistance: 1000Megohms Min.
 Contact Resistance: 25Milliohms Max.
 Operation Temperature: -55°C to +105°C.

S	4.8
M	5.0
L	5.8

Material

Contact :Copper Alloy.
 Insulator:PBT. (Select PA6T /LCP /PA9T)
 Shell: SPCC.
 Screw: Copper Alloy.



DRAW.BY	LinHaiFong	DATE	2005-10-10	UNIT	MM	TOLERANCE UNSPECIFIED	.X ±0.30 .XX ±0.25 .XXX ±0.150	Ang. ±2°
APPVL.BY		VERSION	A	SCALE		DWG.No.	F:/XX/ / +	

Chin Shong
Enterprise CO., LTD.

ITEM	D-SUB H-D Female 180D- DIP
PART No.	
CUSTOMER	