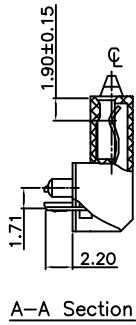
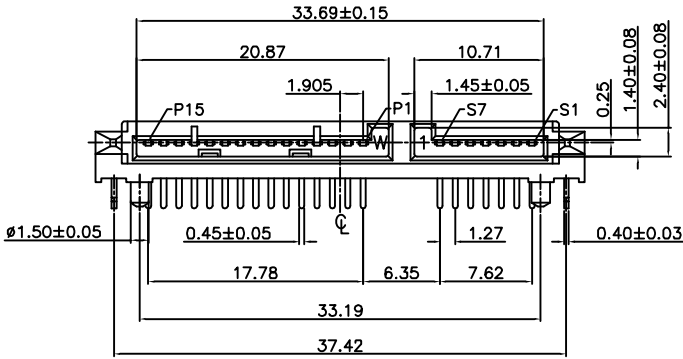


Rev.	Description	Date	Drawn	Checked
A	INITIAL RELEASE	2015.10.05	SWC	

Pin No.	Power Name
P1	V3.3
P2	V3.3
P3	V3.3
P4	GND
P5	GND
P6	GND
P7	V5
P8	V5
P9	V5
P10	GND
P11	DAS/DSS
P12	GND
P13	V12
P14	V12
P15	V12



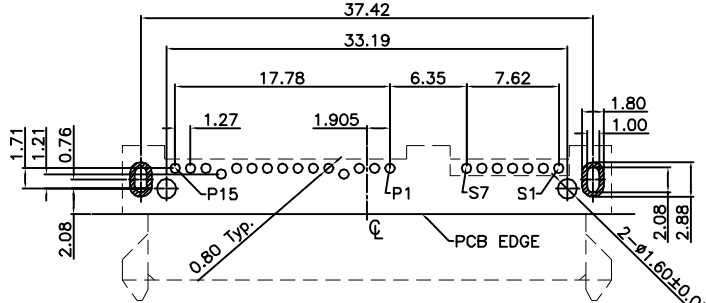
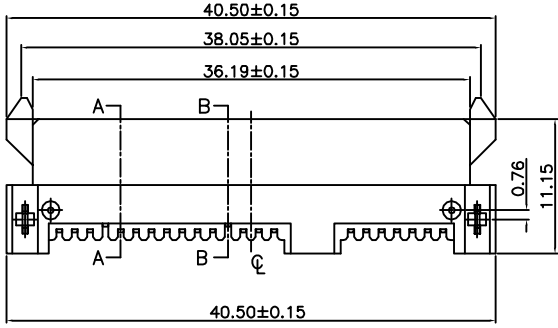
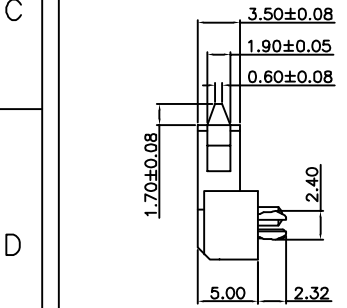
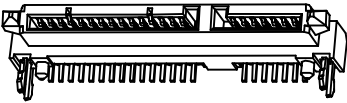
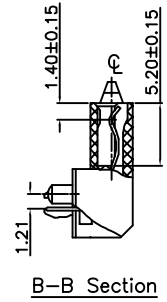
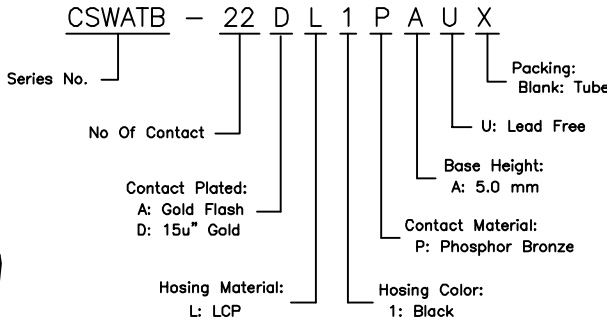
1. Material:

Housing: LCP, UL94V-0, Black
 Contact: Phosphor Bronze, Gold Plated On Contact Area.
 Tin Plated On Solder Tails.
 Nickel Underplated Overall.
 Harpoon: Brass, Tin Plated Over Nickel

2. Specification:

Insertion Force: 45N Max.
 Withdrawal Force: 10N Min.
 Durability: 500 Cycles.
 Current Rating: 1.5 Ampere Per Contact
 Contact Resistance: 30 mΩ Max.
 Insulation Resistance: 1000 MΩ Min.
 Dielectric Withstanding Voltage: 500V AC
 Operation Temperature: -55°C~+85°C

3. Part No.:



PCB Layout (T=1.60 mm)
Component Side

Pin No.	Signal Name
S1	GND
S2	A+
S3	A-
S4	GND
S5	B+
S6	B-
S7	GND

GENERAL TOLERANCE: .X ±0.30 Ang. ±2° .XX ±0.25 .XXX ±0.15	DRAWN: SWC	慶崙企業股份有限公司 CHINSHONG ENTERPRISE CO.,LTD.
	APPROVED:	
UNIT: mm	SCALE: 1:1	DATE: 2015.10.05
PROJECTION: 		VERSION: A
DWG. No.		TITLE SATA 7+15P 90°, Dip Type, H: 5.0 mm
		PART No. CSWATB-22DL1PAU