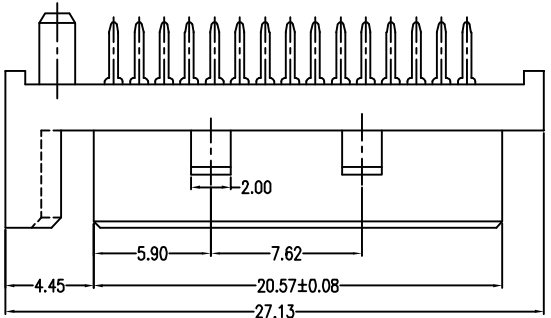


Rev.	Description	Date	Drawn	Checked
A	Initial Release	2012.05.25	SWC	
B	Modify Notes	2013.10.19	SWC	



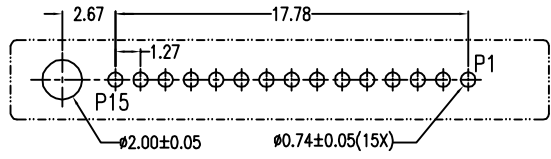
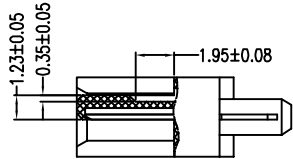
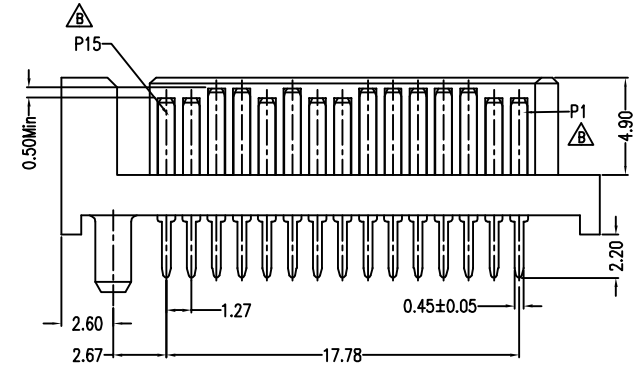
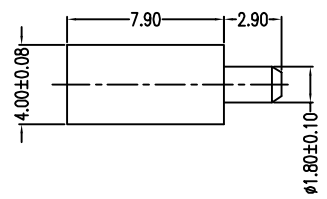
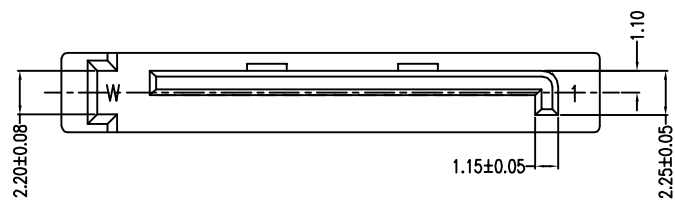
Power Segment			
PIN NO.	Type	PIN NO.	Type
P1	V33	P9	V5
P2	V33	P10	GND
P3	V33	P11	DAS/DSS
P4	GND	P12	GND
P5	GND	P13	V12
P6	GND	P14	V12
P7	V5	P15	V12
P8	V5		

1. Material:  
Housing: LCP, UL 94V-0 Rated, Color: Black;  
Contact: Brass, Gold Plated On Contact Area.  
Tin Plated On Solder Tails.  
Nickel Underplated Overall.


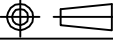
2. Specification:  
Insertion Force: 45N Max.  
Withdrawal Force: 10N Min.  
Durability: 500 Cycles  
Current Rating: 1.5 Ampere Per Contact  
Contact Resistance: 30 mΩ Max.  
Insulation Resistance: 1000 MΩ Min.  
Dielectric Withstanding Voltage: 500V AC.  
Operating Temperature: -55°C to +85°C

3. Part No.:  
WATH - 15 D L B E U 3 \*  
Blank: With-Post  
3: Tray  
U: Lead Free  
E: DIP Type  
B: Brass  
L: LCP

Series No.: SATA For H.D  
Number Of Contacts  
Au: A:>0.8u"; D:15u"; F: 30u"



P.C.B LAYOUT(T=1.60mm)  
COMPONENT SIDE

GENERAL TOLERANCE: .X ±0.38 Ang. ±3° .XX ±0.25 .XXX ±0.20		DRAWN: SWC	 <b>慶崙企業股份有限公司</b> <b>CHINSHONG ENTERPRISE CO.,LTD.</b>	
UNIT: mm SCALE: Free		APPROVED :		
PROJECTION: 	DATE: 2013.10.19	TITLE	SATA 15P DIP Male (Vertical Type)	
DWG. No.	VERSION: B	PART No.	WATH-15DLBEU3	