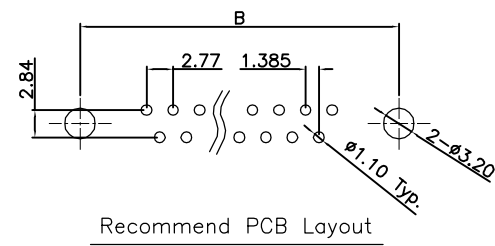
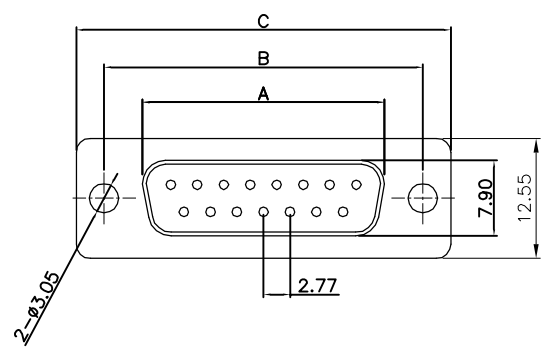


Rev.	Description	Date	Drawn	Checked
A	INITIAL RELEASE	2005.10.10	LIN	
B	ADD OPTION	2016.09.08	SWC	



1. Specification:

Contact Current Rating: 3 Amperes.  
 Dielectric Withstanding Voltage: AC 500V at sea level.  
 Insulation Resistance: 1000 Megohms Min.  
 Contact Resistance: 30 Milliohms Max.  
 Operation Temperature: -55°C to +105°C.

2. Material:

Contact: Copper Alloy  
 Insulator: Selection (PBT/PA6T/LCP/PA9T)  
 Screw: Copper Alloy.  
 Shell: SPCC.

3. Part No.

Series: D-SUB 180° Type

Pin No: 09, 15, 25, 37

Female

Shell Plated:  
 7: Full Nickel  
 8: Nickel/But Back-Shell: Tin.  
 9: Tin  
 11: Gold

Color Type:  
 1: White  
 3: Black  
 4: Yellow  
 6: Green  
 9: Blue  
 10: PC99

Contact Material Plated:  
 1: Full Gold  
 2: Half Gold

Housing Material:  
 Vacant: Default PBT  
 P2: PA6T  
 P3: LCP  
 P4: PA9T

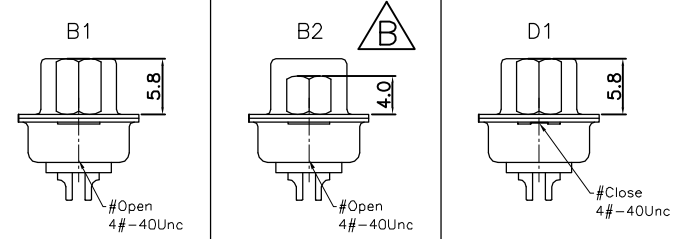
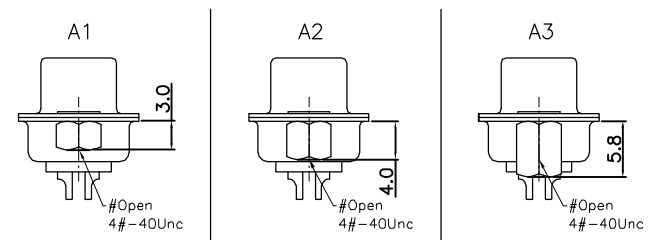
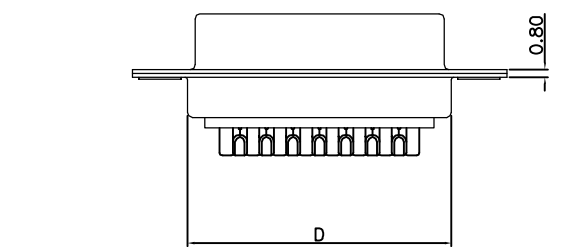
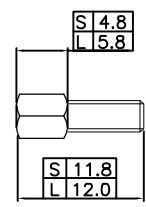
Screw Size:  
 Vacant: No Screw  
 S: 4.8x11.8  
 L: 5.8x12.0

Screw Type:  
 Vacant: No Accessories  
 A1: After Screw H:3.0 (Open)  
 A2: After Screw H:4.0 (Open)  
 A3: After Screw H:5.8 (Open)  
 B1: Coalescent Nut H:5.8 (Open)  
 B2: Coalescent Nut H:4.0 (Open)  
 D1: Coalescent Nut H:5.8 (Close)

Contact Plated:  
 Vacant: Gold Flash  
 3: 3u"  
 5: 5u"  
 6: 10u"  
 7: 15u"  
 8: 30u"



No.	A	B	C	D
09	16.33	24.99	30.81	19.23
15	24.66	33.32	39.14	27.56
25	38.38	47.04	53.04	41.28
37	54.84	63.50	69.32	57.33



GENERAL TOLERANCE: .X ±0.35 Ang. ±2° .XX ±0.25 .XXX ±0.15	DRAWN: SWC	<b>慶崙企業股份有限公司</b> <b>CHINSHONG ENTERPRISE CO.,LTD.</b>
UNIT: mm SCALE: Free	APPROVED:	
PROJECTION:	DATE: 2016.09.08	TITLE D-SUB, FEMALE, SOLDER TYPE
DWG. No.	VERSION: B	PART No. 105XXFXXXX-XX-X-XX-LF