

Rev.	Description	Date	Drawn	Checked
A	INITIAL RELEASE	2005.10.10	SHC	

Notes:

1.ELECTRICAL CHARACTERISTICS

Contact Current Rating:3Amperes.  
 Dielectric Withstanding Voltage:AC 500V at sea level.  
 Insulation Resistance:1000 Megohms Min.  
 Operation Temperature : -55°C to +105°C.

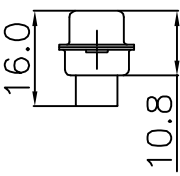
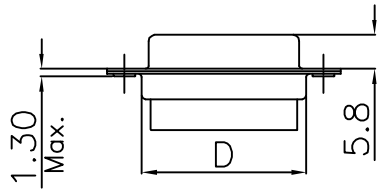
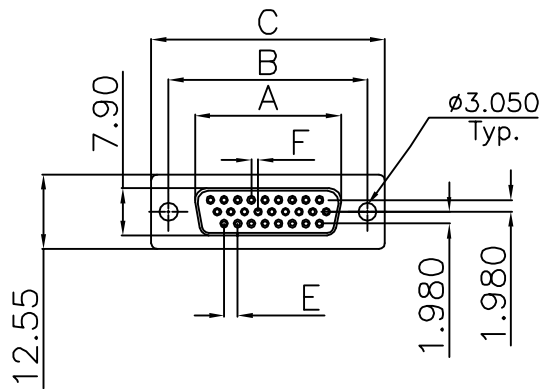
2.Material

Insulator: Option (PBT/PA6T /LCP /PA9T)  
 Shell: SPCC.  
 Screw: Copper Alloy.

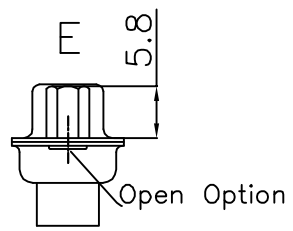
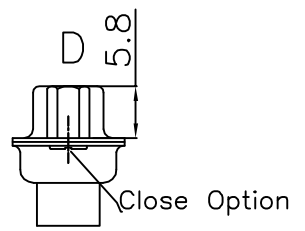
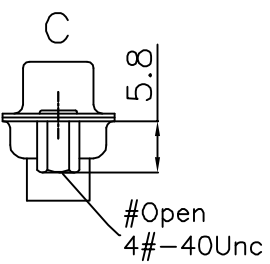
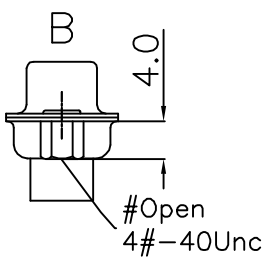
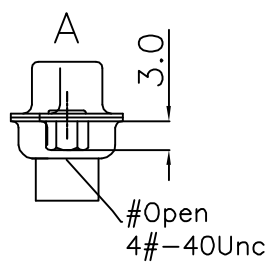
3.PART NO.:

102XXFX3-X-X-X-LF

Series: D-Sub Comrip Typ  
 Pin No.: 15, 26, 44, 62  
 Female  
 Shell Plated:  
 7.Full Nickel  
 8.Nickel /But back-Shell:Tin.  
 9.Tin  
 11.Gold  
 Color Type:  
 3 Black  
 Insulator Material:  
 Vacant:Default PBT  
 P2:PA6T  
 P3:LCP  
 P4:PA9T  
 Screw Size:  
 Vacant:No Screw  
 S:4.8  
 M:5.0  
 L:5.8  
 Screw Type:  
 Vacant: No Accessories  
 A After -Screw H=3.0  
 B After -Screw H=4.0  
 C After -Screw H=5.8  
 D Before -Screw H=5.8  
 E .Coalescent Nut H=5.8



S	4.8
M	5.0
L	5.8



No.	A	B	C	D	E	F
15	16.33	24.99	30.81	19.23	2.29	1.145
26	24.66	33.32	39.14	27.56	2.29	1.145
44	38.38	47.04	53.04	41.28	2.29	1.145
62	54.84	63.50	69.32	57.33	2.41	1.205



GENERAL TOLERANCE: .X ±0.30 Ang. ±2° .XX ±0.25 .XXX ±0.15	SCALE: Free	DATE: 2005.10.10	TITLE D-SUB H-D Female Crimp
	UNIT: mm		
PROJECTION: 	DWG. No.	PART No.	102XXFX3-X-X-X-LF

**慶崙企業股份有限公司**  
CHINSHONG ENTERPRISE CO.,LTD.