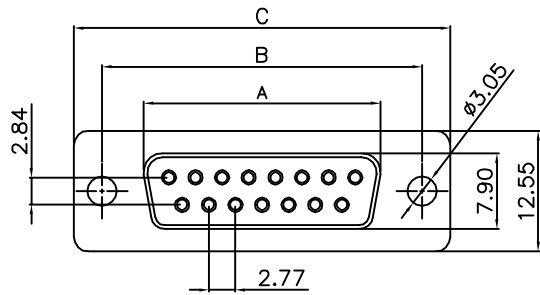


1 2 3 4 5 6 7 8

Rev.	Description	Date	Drawn	Checked
A	INITIAL RELEASE	2005.10.10	SWC	



No.	A	B	C	D
09	16.33	24.99	30.81	19.23
15	24.66	33.32	39.14	27.56
25	38.38	47.04	53.04	41.28
37	54.84	63.50	69.32	57.33

1. Electrical Characteristics:

Contact Current Rating: 3 Amperes.
 Dielectric Withstanding Voltage: AC 500V at sea level.
 Insulation Resistance: 1000 Megohms Min.
 Operation Temperature : -55°C to +105°C.

2. Material

Insulator: Option (PBT/PA6T /LCP /PA9T)
 Shell: SPCC.
 Screw: Copper Alloy.



3. Part No.

Series: D-Sub Comrip Type

Pin No.: 09, 15, 25, 37

Female

Shell Plated:
 7.Full Nickel
 8.Nickel /But back-Shell: Tin.
 9.Tin
 11.Gold

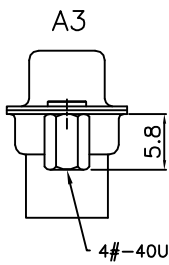
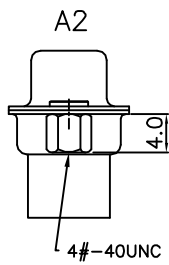
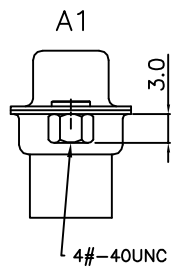
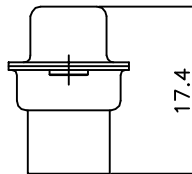
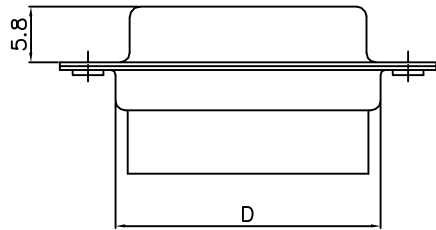
Color Type:
 3 Black

Insulator Material:
 Vacant:Default PBT
 P2:PA6T
 P3:LCP
 P4:PA9T

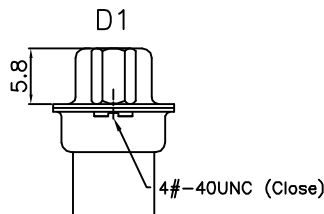
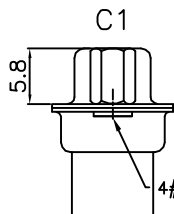
Screw Size:
 Vacant: No Screw
 S: 4.8
 M: 5.0
 L: 5.8

Screw Type:
 Vacant: No Accessories
 A1: After Screw H=3.0 (Open)
 A2: After Screw H=4.0 (Open)
 A3: After Screw H=5.8 (Open)
 C1: Before Screw H=5.8 (Open)
 D1: Before Screw H=5.8 (Close)

Part No. Breakdown: 101 XX F X 3 - XX - X - X - LF



S	4.8
M	5.0
L	5.8



GENERAL TOLERANCE: .X ±0.30 Ang. ±2° .XX ±0.25 .XXX ±0.15	
UNIT: mm	SCALE: Free
PROJECTION:	
DWG. No.	

DRAWN: SWC
APPROVED :
DATE: 2005.10.10
VERSION: A

慶崙企業股份有限公司
CHINSHONG ENTERPRISE CO.,LTD.

TITLE: D-SUB Female Crimp

PART No.: 101XXFX3-XX-X-X-LF

2 3 4 5 6 7 8

A

B

C

D

E

F

A

B

C

D

E

F