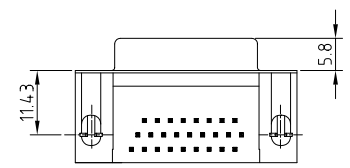
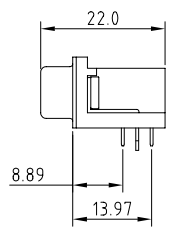
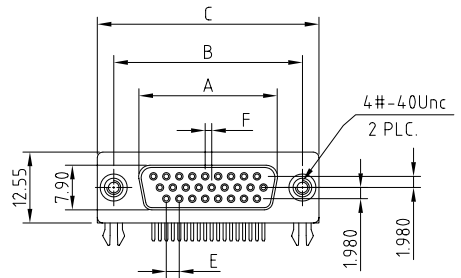


1 2 3 4 5 6 7 8

RevNo	Item	Date	Signature	Checked
X1	Change material	20110323	Eric_Lin	



**1 0 4 X X F X X X - - - - L F**

D-Sub 90D		Vacant:Default PBT
Typ		P2:PA6T
15		P3:LCP
26	Female	P4:PA9T
44		Vacant:No Screw
62	8.Nickel	S:4.8
	9.Tin	L:5.8
	11.Gold	Vacant:No Accessories
		V. Lock Screw.
		VI. With Screw.
		VII.Additional Screw.
1.White		
3.Black		Vacant :Default 1u'
4.Yellow		3. 3u'
6.Green		5. 5u'
9.Blue		6. 10u'
10. PC99	1 Full Gold	7. 15u'
	2 Half Gold	8. 30u'

Note:

No.	A	B	C	E	F	H
15	16.33	24.99	30.81	2.29	1.145	7.04
26	24.66	33.32	39.14	2.29	1.145	6.88
44	38.38	47.04	53.04	2.29	1.145	6.88
62	54.84	63.50	69.32	2.41	1.205	7.00



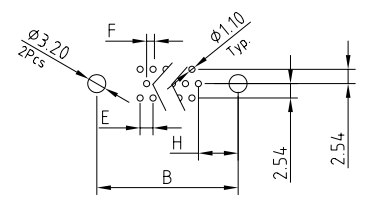
**ELECTRICAL CHARACTERISTICS**

Contact Current Rating:3Amperes.  
 Dielectric Withstanding Voltage:AC 500V at sea level.  
 Insulation Resistance:1000Megohms Min.  
 Contact Resistance:25Milliohms Max.  
 Operation Temperature : -55°C to +105°C.

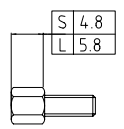
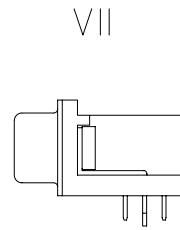
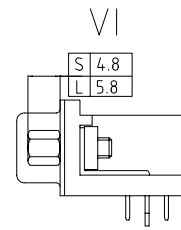
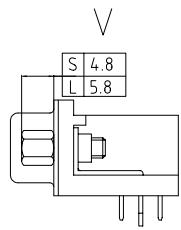
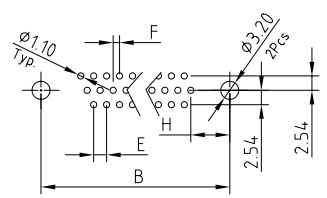
**Material**

Contact :Copper Alloy.  
 Insulator:PBT. [Select PA6T /LCP /PA9T]  
 Shell: SPCC.  
 Z-Piece: Fe.  
 Screw: Copper Alloy.  
 Rivet: Copper Alloy. or Zinc.

Re Layout P.C.B.  
15 POSITION



Re Layout P.C.B.  
26 /44 /62POSITION



DRAW.BY	Eric_Lin	DATE	2005-10-10	UNIT	MM	TOLERANCE	X ±0.30 XX ±0.25 XXX ±0.150	Ang. ±2°
APPVL.BY		VERSION	A	SCALE		DWG.No.	F:/XX/ / +	

Chin Shong  
Enterprise CO., LTD.

ITEM	D-SUB H-D Female 90D-DIP
PART No.	
CUSTOMER	

1 2 3 4 5 6 7 8